

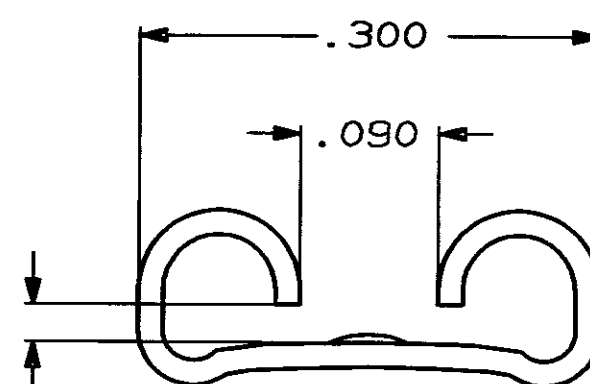
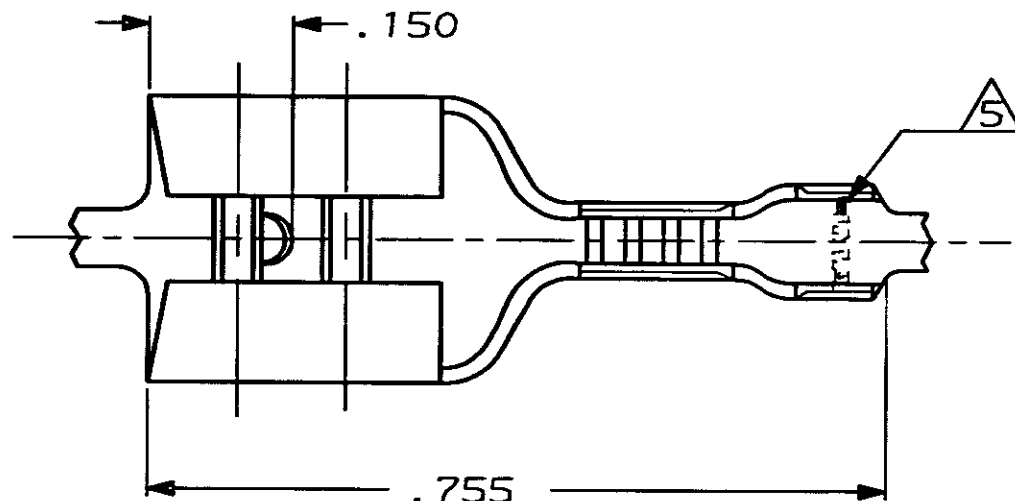
THIS DRAWING IS UNPUBLISHED. RELEASED FOR PUBLICATION ,19 .

© COPYRIGHT 19 BY AMP INCORPORATED. ALL INTERNATIONAL RIGHTS RESERVED.

LOC AF DIST 50 P F

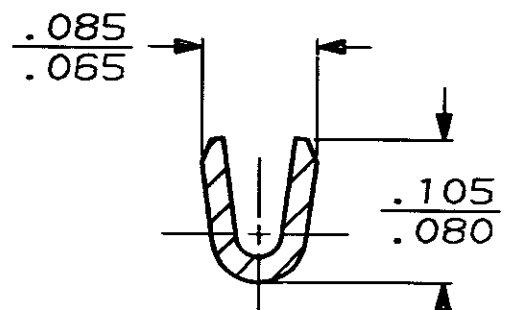
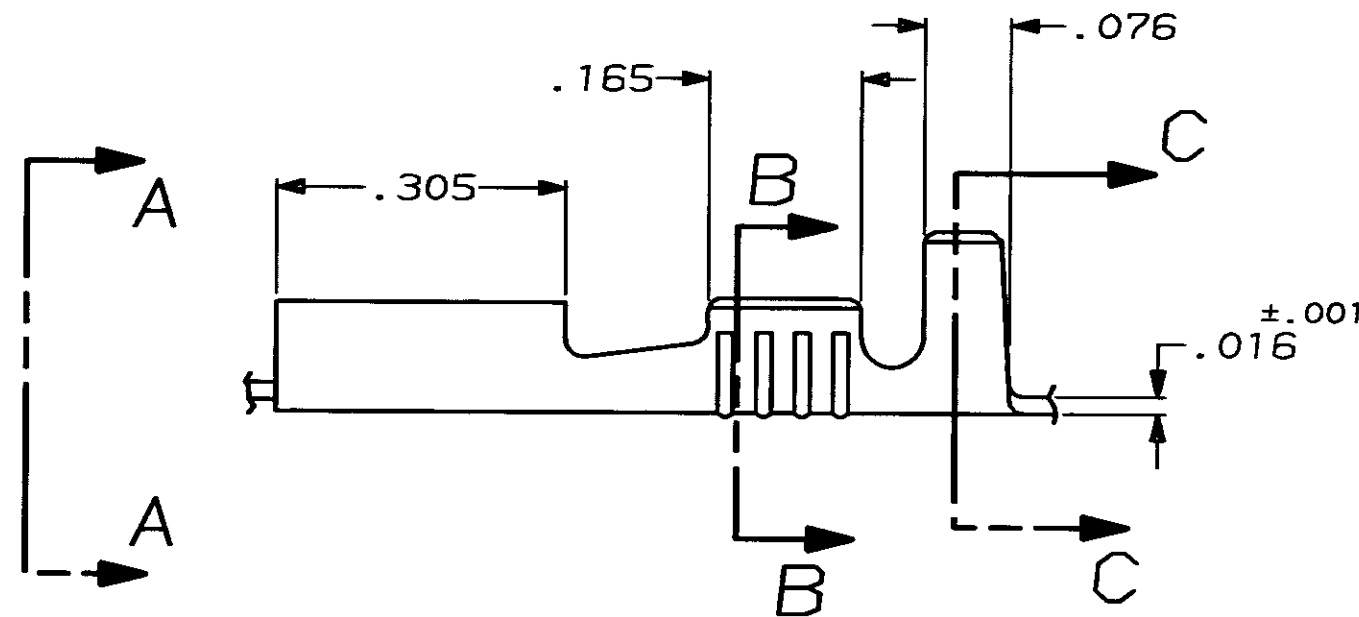
REVISIONS

ZONE	LTR	DESCRIPTION	DATE	APPD
	F	ADDED -3 PER PR93-46	7/3/93	JR/CM

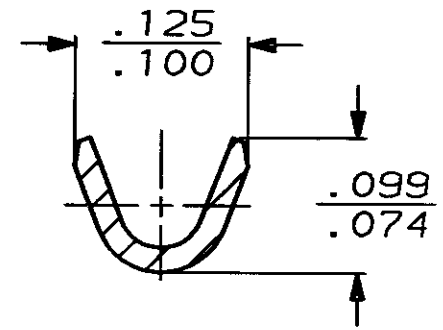


- 1 CONTINUOUS STRIP ON REELS
- 2 MATERIAL #4H BRASS - TIN PLATE .000080 MIN. THK.
- 3 MATERIAL #2H STEEL - GOLD PLATE .000050 MIN OVER NICKEL.
- 4 MATERIAL T3 PHOS BRZ - TIN PLATE .000080 MIN. THK.
- 5 FOR 61368-3 ONLY, AMP*. ALL OTHERS JUST AMP.

FITS .250 SERIES FASTON TAB
VIEW A-A
SCALE 8:1



SECTION B-B
SCALE 8:1



SECTION C-C
SCALE 8:1

OBSOLETE	.030-.070	24-20	.032	△	61368-3
	.030-.070	24-20	.032	△	61368-2
	.030-.070	24-20	.032	△	61368-1
INSUL RANGE	WIRE SIZE	MATING TAB THK ±.001	MATERIAL FINISH	PART NO	

DO NOT SCALE PRINT. UNLESS SPECIFIED DIMENSIONS IN INCHES TOLERANCES ON: 2 PLC DEC ± - 3 PLC DEC ± .010 ANGLES ± -	DR 12/3/90 JR RUTH	AMP INCORPORATED Harrisburg, Pa. 17105
	CHK 12/3/90 MS FEHER	
MATERIAL SEE TABLE	APPD 12/3/93 C MEYERS	NAME RECEPTACLE, FASTON,™ .250 SERIES
	APPD 12/3/93 D REINER	
FINISH SEE TABLE	PRODUCT SPEC -	SIZE B
	APPLICATION SPEC -	FSCM NO 00779
WEIGHT -		DRAWING NO 61368
	SCALE 5:1	SHEET 1 OF 1